

ATTACHMENT 1A-2

PROPOSAL – 1

NEW CERTIFICATE OR DEGREE PROGRAM

1. PROPOSED PROGRAM TITLE

Interdisciplinary Studies, Bachelor of Arts

2. CIP CODE REQUESTED

30.0000

3. CONTACT PERSON

Name: Sharon Gaber, Provost and Vice Chancellor for Academic Affairs

Name of Institution: University of Arkansas - Fayetteville

Address: ADMN 422, University of Arkansas, Fayetteville, AR 72701

E-mail Address: sgaber@uark.edu@uark.edu

Phone Number: 479-575-2151

4. PROPOSED STARTING DATE

Fall 2014

5. PROGRAM SUMMARY

Provide a general description of the proposed program. Include overview of any curriculum additions or modifications; program costs; faculty resources, library resources, facilities and equipment; purpose of the program; and any information that will serve as introduction to the program.

Program Description

The Interdisciplinary Studies Program is targeted toward highly-motivated students whose interests, needs, and talents are not reflected or met by existing majors. It is a proposal-driven major in which students must develop a set of courses which will encourage the student to explore and make connections between two or more areas in sufficient depth and breadth to

prepare them for employment or graduate/professional study. There are two options available for students wishing to pursue a B.A. in Interdisciplinary Studies.

Option1: Construction of an Interdisciplinary Studies major consisting of three thematically linked minors from within the Fulbright College of Arts and Sciences

Option 2: Construction of an Interdisciplinary Studies major consisting of a thematically linked set of coursework without the required minors framework

Curricular Additions

A single new course (IDST 2003 Introduction to Interdisciplinary Studies) is being proposed as a part of this program. This course is designed to introduce students to the concept of interdisciplinary studies. It may be taken by students considering pursuit of an Interdisciplinary Studies major or by students in their first semester following acceptance into the program. It will be required of all Interdisciplinary Studies majors. [IDST 2003 Introduction to Interdisciplinary Studies will be developed for online delivery.](#)

Program costs

See personnel needs (page 11) and other costs (page 12)

Faculty Resources

All full-time faculty of the Fulbright College of Arts and Sciences are eligible to serve as sponsors for students in this program and teach courses which may be used in meeting the requirements of the Interdisciplinary Studies major.

Library Resources

As the IDST program relies heavily on existing degree programs, no additional library resources are anticipated beyond those necessary to support those programs for the implementation of this program.

Facilities and Equipment

As the IDST program relies heavily on existing degree programs and their course offerings, no additional instructional facilities, equipment, or related resources are anticipated beyond those necessary to support those programs for the implementation of this program.

[The necessary online infrastructure for the delivery of online courses already exists at the University of Arkansas. No additional facilities or equipment are needed for the delivery of the online courses of the Interdisciplinary Studies, BA.](#)

Purpose of the Program

The major purpose of the proposed IDST program is to serve students whose needs are not being met by existing degree programs. It is also anticipated that access to such a program will enhance retention and graduation rates and also provide a vehicle in which faculty can develop and pilot new majors or options to existing majors.

List degree programs or emphasis areas currently offered at the institution that support the proposed program.

Coursework supporting the major in Interdisciplinary Studies can be drawn from all academic programs and degree programs in the Fulbright College of Arts and Sciences. Current courses are listed in the College Catalog. The only new course necessary for implementation of the IDST program is the IDST 2003 (Introduction to Interdisciplinary Studies) mentioned above.

6. NEED FOR THE PROGRAM (Submit Employer Needs Survey Forms)

[Employer survey will be conducted after full approval from the Fulbright College of Arts and Sciences.]

Provide survey data (number not percentage) on student interest (number of students planning to enroll), job availability, corporate demands and employment/wage projections. Focus mostly on state needs and less on regional and national needs, unless applicable to the program.

Survey data can be obtained by telephone, letters of interest, student inquiry, etc. Focus mostly on state needs for undergraduate programs; and state, regional and national needs for graduate programs.

Provide names/types of organizations/businesses surveyed.

Letters of support should address the following when relevant: the number of current/anticipated job vacancies, whether the degree is desired or required for advancement, the increase in wages projected based on additional education, etc.

Indicate if employer tuition assistance is provided or other enrollment incentives.

Describe what need the proposed program will address and how the institution became aware of this need.

The primary purpose of this program is to provide an academic program which will serve students whose needs are not being met by existing degree programs. As students finding themselves in such a situation often leave the University, a program of this nature will enhance retention and ultimately increase graduation rates. The need for such a program initially came to our attention through inquiries to the Dean's office.

As we began to explore the need for such a program, we searched SEC institutions, universities from other nearby states, and state universities within Arkansas to determine how common programs such as the one proposed herein are. The results are summarized below.

	Institutions Having Programs Similar to the Proposed Program	Institutions Not Having Programs Similar to the Proposed Program
SEC	Alabama Auburn Florida Georgia Kentucky Louisiana State Mississippi State Missouri South Carolina	Arkansas Mississippi Tennessee Texas A&M Vanderbilt
Other	Oklahoma Kansas	Oklahoma State Kansas State
In Arkansas	Arkansas State Southern Arkansas (Magnolia) Central Arkansas	Arkansas-Fayetteville Arkansas- Fort Smith Arkansas-Little Rock Arkansas-Pine Bluff Arkansas Tech Henderson State

While we do not have enrollment numbers for all of the programs listed, the numbers at Louisiana State (700+ majors) and Oklahoma (900+ majors) indicates the popularity and student acceptance of such degree programs.

The following statements from the National Science foundation and the Natinal Academy of Science also emphasize the growing importance of interdisciplinary work.

The National Science Foundation recognizes “the value of interdisciplinary in pushing fields forward and accelerating scientific discovery. Important research ideas often transcend the scope of a single discipline or program. NSF also understands that the integration of research and education through interdisciplinary training prepares a workforce that undertakes scientific challenges in innovative ways.”

http://www.nsf.gov/od/oia/additional_resources/interdisciplinary_research/index.jsp

The National Academy of Sciences further states that interdisciplinary research is needed to “address complex problems that cut across traditional disciplines, and the capacity of new technologies to both transform existing disciplines and generate new ones.”

<http://www8.nationalacademies.org/onpinews/newsitem.aspx?RecordID=11153>

Taken together, all of these point to the need for a program where students learn to synthesize and/or apply information from the humanities, social sciences, natural sciences, and/or other disciplines such that they are able to tackle research or workforce problems in creative ways.

Indicate the composition of the program advisory committee, including the number of members, professional background of members, topics to be considered by the members, meeting schedule (annually, bi-annually, quarterly), institutional representative, etc.

The initial Program Advisory Committee will be composed of three tenure-track faculty members of the Fulbright College of Arts and Sciences. One member from each division (arts and letters, math and science, social sciences) of the College Faculty will be appointed by the Dean to serve on the committee. As the program grows, the Dean may add an “at large” member to reflect the area in which the greatest concentration of students are found. Committee members will serve three year staggered terms with one committee position being open each year.

The Program Advisory Committee will meet at least one time per semester and will conduct a periodic review of enrollment in the program, distribution of students in the program, and problems which arise. Based on this review, the committee will advise the Dean and director of the program regarding issues and changes which might further improve and enhance

the program. The committee will also serve as an Appeals Committee to consider appeals regarding admission to the program and other relevant issues.

Indicate the projected number of program graduates in 3-5 years.

Assuming that most students will enter the IDST program during their second year and graduating at the end of their fourth and also that there will be some attrition in between, the following projections are made. (These estimates are intended to be conservative. The program may easily exceed these expectations.)

	Entering Program	Graduating
2014-15	30	
2015-16	40	
2016-17	60	21
2017-18	80	28
2018-19	100	42

7. CURRICULUM

Provide curriculum outline by semester (course number/title).

The course plan for the Interdisciplinary Studies program is an individual plan, developed by the student and their sponsor. The course plan must contain a minimum of 45 credit hours (IDST 2003 + an additional 42 hours) defining the major. For Option 2, a maximum of 21 hours of the proposed course work may come from a single discipline. Thirty credit hours of the proposed coursework must be at the 3000 or 4000 level. At least 2/3 of the advanced level course work must be completed on this campus. In addition to the coursework defined in the student's Interdisciplinary Studies major, the student must satisfy all College and University rules regarding core and advanced level course requirements.

(For bachelor's degree program, submit the 8-semester degree plan.)

Eight-Semester Degree Program for Interdisciplinary Studies

Students in the IDST program develop individualized course plans meeting the above requirements. These are referred to in the plan below as IDST Course Plan hours.

Fall Semester Year 1

3 ENGL 1013 *Composition I**

3 MATH 1203* (or higher if appropriate for IDST individual program)

4 *Approved science university/state core lecture with corequisite lab requirement*

3 Elementary II world language course* (recommended)

3 *Fine Arts university/state core requirement**

16 Semester hours

Spring Semester Year 1

3 ENGL 1023 *Composition II*

4 *Approved science university/state core lecture with corequisite lab requirement*

3 *Intermediate I world language course* (recommended) or other humanities university/state core course requirement*

3 *HIST 200*3 or HIST 2013* or PLSC 2003**

3 General Elective*

16 Semester hours

Fall Semester Year 2

3 *Social Science university/state core requirement**

3 IDST 2003 *Introduction to Interdisciplinary Studies*

9 IDST Course Plan

15 Semester hours

Spring Semester Year 2

3 *Social Science university/state core requirement**

11 IDST Course Plan

14 Semester hours

Fall Semester Year 3

3 *Social Science university/state core requirement**

12 IDST Course Plan

15 Semester hours

Spring Semester Year 3

15 IDST Course Plan

15 Semester hours

Fall Semester Year 4

15 IDST Course Plan

15 Semester hours

Spring Semester Year 4

14 IDST Course Plan

14 Semester hours

120 Total Hours

Give total number of semester credit hours required for the program, including

prerequisite courses.

120

Identify 35-hour state minimum general education core courses (in italics).

In italics in above degree plan

Identify required courses that meet institutional and program area/degree major requirements.

IDST 2003 + IDST Course Plan hours sufficient to meet above requirements

Identify new courses (with an underline) and provide course descriptions.

IDST 2003 Introduction to Interdisciplinary Studies

Introduces students to the concept of interdisciplinary studies. May be taken by students considering pursuit of an Interdisciplinary Studies major or by students in their first semester following acceptance into the program. Required of all Interdisciplinary Studies majors.

Identify courses currently offered by distance technology (with an asterisk).

Currently enough online courses are offered at the 2000, 3000, and 4000 level for a students to complete more than 50% of the credit hours required for this degree through online courses, for some specific combinations of minors. Science courses in Physics, Chemistry and Biology are being explored and developed with the objective of having them ready for fall 2014. This would make a full viable combination of core courses available online. The English 1023 composition course has been offered previously online and is undergoing revisions in order to be listed again in the catalogue by fall of 2014. The following table presents the number of credit hours for each of the listed minors that can already be completed online.

<u>Minor</u>	<u>Social Work</u>	<u>History</u>	<u>Communications</u>	<u>Anthropology</u>	<u>French</u>	<u>Physics</u>
<u>Credit hours required</u>	<u>18</u>	<u>21</u>	<u>21</u>	<u>15</u>	<u>15</u>	<u>6</u>
<u>Credit hours available through online courses</u>	<u>18</u>	<u>15</u>	<u>21</u>	<u>6</u>	<u>6</u>	<u>15</u>

Departments currently exploring and developing online courses that would satisfy the requirements of their minor include: Sociology and Criminal Justice, Geosciences, African and African American Studies, World Languages, and English.

None

Indicate the number of contact hours for internship/clinical courses.

Students in the Interdisciplinary Studies program are strongly encouraged to include an Independent Study/Research Project as a component of their proposed major. Students pursuing independent study/research may add up to 6 credit hours of such activity to the

21 hour maximum in a single discipline (in Option 2) or to a minor (in Option 1) in their degree plan.

For each program area/major course, provide the name of the faculty teaching the course.

IDST 2003 to be taught by Director of program or another faculty member approved by the Dean, Director, and Program Advisory Committee

State program admission requirements.

Application to Interdisciplinary Studies Program:

A student interested in pursuing a degree in Interdisciplinary Studies must have earned at least 30, but not more than 75, credit hours in order to apply for admission to the program. The student should first consult with the Program Director to discuss whether such a program is appropriate for the student and, if so, which Option would be best for the student. The student must then seek out a member of the Fulbright College of Arts and Sciences faculty who is willing to sponsor their application. The application procedure is the same for both options and consists of two components – a course plan for the major and a narrative statement.

The course plan for the Interdisciplinary Studies program is an individual plan, developed by the student and their sponsor. The course plan must contain a minimum of 45 credit hours (IDST 2003 + an additional 42 hours) defining the major. A maximum of 21 hours (or the minimum required by a given minor in Option 1) of the proposed course work may come from a single discipline. Thirty credit hours of the proposed coursework must be at the 3000 or 4000 level. At least 2/3 of the advanced level course work must be completed on this campus.

The narrative statement must address the following questions:

How does the proposed coursework or minors fit together thematically? What makes this qualify as an Interdisciplinary Studies major rather than being just a collection of courses?

How are the student's interests and needs not being met by existing degree programs?

How does the student view the proposed Interdisciplinary Studies major as contributing to his or her career goals and post-graduate opportunities (employment, graduate school, professional school, etc)?

The student's application is reviewed first by a UA faculty sponsor and then submitted to the Program Director for review. At either step, the student's application to the program may be accepted, rejected, or sent back to the student for revision. A rejection by the Program Director may be appealed to the Program Committee.

Describe specified learning outcomes and course examination procedures.

Once approved, the student's course plan is considered to be a contract for the Interdisciplinary Studies major. Changes in the approved degree plan can be made only with the prior approval of the student Interdisciplinary Studies advisor and the Program Director.

Students must have a GPA of 3.0 on any coursework to be used as a part of the proposed Interdisciplinary Studies major taken before acceptance into the program and must maintain a GPA of 2.75 or better on coursework constituting the major for continuation in the program and in order to graduate with an Interdisciplinary Studies major. Should a student's GPA in the major fall below 2.75, they will have one semester to bring the GPA back to an acceptable level.

Include a copy of the course evaluation to be completed by the student. (Course evaluations should request student comments on textbook use (amount/level of use), and faculty communication (speak clearly, can be understood).

The standard student evaluation form used throughout the University will be used for this course.

Include information received from potential employers about course content.

(Employer survey to be submitted after college committee approval)

Provide institutional curriculum committee review/approval date for proposed program.

TBD

8. FACULTY

List the names and credentials (college/university awarding degree; degree level; degree field) of all faculty teaching courses in the proposed program. (For associate degrees and above: A minimum of one full-time faculty member with appropriate academic credentials is required.)

All tenure-track faculty of the Fulbright College of Arts and Sciences are eligible to serve as sponsors for students in this program and teach courses which may be used in meeting the requirements of the Interdisciplinary Studies major. Names and credentials of these faculty (currently more than 350) may be found in the current College Catalog.

Total number of faculty required for program implementation, including the number of existing faculty and number of new faculty. For new faculty provide the expected academic credentials/professional experience and expected hire date.

See above statement

No new faculty hires anticipated other than those through normal Departmental requests

For proposed graduate programs: Provide the curriculum vita for faculty teaching in the program, and the expected credentials for new faculty and expected hire date. Provide the projected startup costs for faculty research laboratories, and the projected number of and costs for graduate teaching and research assistants.

Not applicable

9. DESCRIPTION OF RESOURCES

Current library resources in the field

As the IDST program relies heavily on existing degree programs, no additional library resources are anticipated beyond those necessary to support those programs for the implementation of this program.

Current instructional facilities including classrooms, instructional equipment and technology, laboratories (if applicable)

As the IDST program relies heavily on existing degree programs and their course offerings, no additional instructional facilities, equipment, or related resources are anticipated beyond those necessary to support those programs for the implementation of this program.

The delivery of online courses would not necessitate any additional instructional facilities or instructional equipment. The infrastructure and capacity for the delivery of online courses already exists at the university.

New instructional resources required, including costs and acquisition plan

A large number of courses that are included in the degree plan of the IDST program already exist for online delivery in the university. More courses will be developed before the fall of 2014 and throughout the coming years as departments add more online courses that satisfy the minors' requirements. The university envisions an expansion of the menu of courses that would serve the IDST program. The Global Campus at the University of Arkansas, Fayetteville, has a support team comprised of instructional designers, academic technologists,

and multimedia specialists that are dedicated to working with the faculty for the development of online courses, in collaboration with the Teaching and Faculty Support Center, and the University Information Technology department. As additional instructional needs develop, the university is prepared to continue to add faculty and instructors in order to satisfy the needs for the program.None

10. NEW PROGRAM COSTS – Expenditures for the first 3 years

New administrative costs (number and position titles of new administrators)

Program Director--\$140,070
(\$107,829 salary plus \$32,241 fringe benefits)
12 month appointment
50% IDST Director/50% home department

IDST Advisor for Fulbright Advising Center--\$39,896
(\$30,713 salary plus \$9,183 fringe benefits)

Part-time (50%) staff member to assist Director in program administration--
\$16,411 - \$17,232
(\$12,634 - \$13,266 salary plus \$3,777 – \$3,966 fringe benefits)
12 month appointment
50% Administrative Specialist III or Administrative Support Supervisor

Number of new faculty (full-time and part-time) and costs

None requested

New library resources and costs

None requested

New/renovated facilities and costs

None requested

New instructional equipment and costs

None requested

Distance delivery costs (if applicable)

None requested. The necessary online infrastructure for the delivery of online courses already exists at the University of Arkansas.

Other new costs (graduate assistants, secretarial support, supplies, faculty development, faculty/students research, program accreditation, etc.)

Office Set-up for Director and Staff Member - \$15,000

Travel for Director (or designee) to attend professional meetings related to best practices in Interdisciplinary Studies and online programs - \$2000/year

--No new costs required for program implementation (Provide explanation)

Not applicable

11. SOURCES OF PROGRAM FUNDING – Income for the first 3 years of program operation

If there will be a reallocation of funds, indicate from which department, program, etc.

None

Indicate the projected annual student enrollment and expected annual tuition/fees for the proposed program (Provide the amount of student tuition per credit hour)

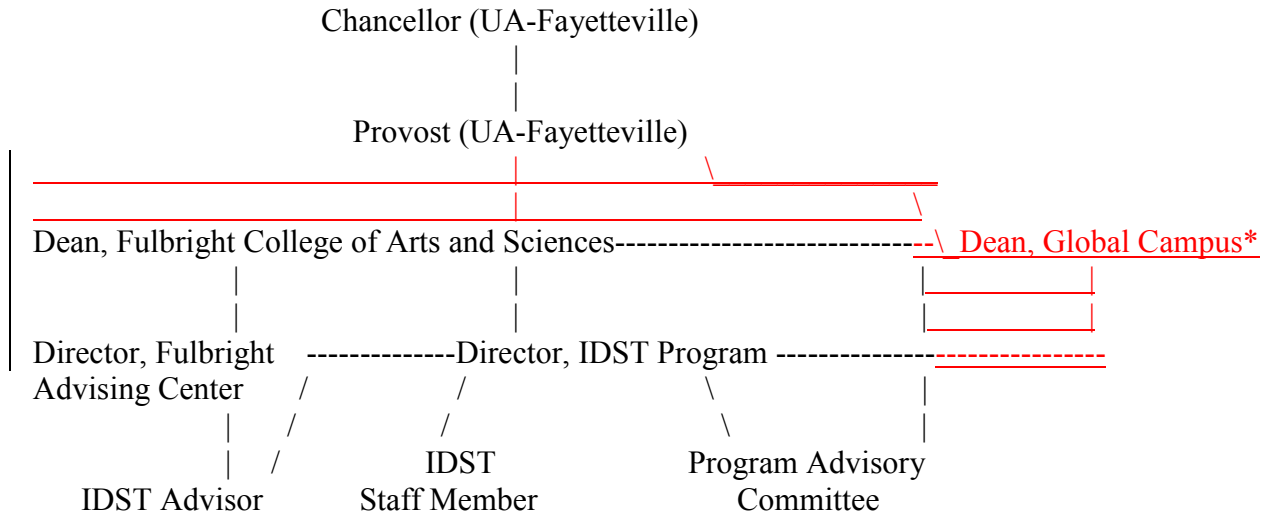
Based on projections in Item 6, 15 credit hours per student per semester, and tuition increasing at 4% per year from current \$204.70 per credit hour. (For the sake of simplicity, only in-state tuition is considered.)

	# Students	Total Credit Hours	Tuition Rate	Income from Tuition
2014-15	30	900	\$221.40/hour	\$199,260
2015-16	40	1200	\$230.26/hour	\$276,312
2016-17	60	1800	\$239.47/hour	\$431,046

Indicate the projected annual state general revenues for the proposed program (Provide the amount of state general revenue per student)

Other (grants, employers, special tuition rates, mandatory technology fees, program specific fees, etc.)

12. ORGANIZATIONAL CHART REFLECTING NEW PROGRAM



*Global Campus will serve in a support capacity for online course development, recruiting, advising and student retention services for the Interdisciplinary Studies, BA program.

Proposed program will be housed in (department/college)

Fulbright College of Arts and Sciences

13. SPECIALIZED REQUIREMENTS

Describe specialized accreditation requirements for program (name of accrediting agency)

None

Licensure/certification requirements for student entry into the field (name of program licensure/approving agencies)

None

Provide documentation of Agency/Board approvals (education, nursing--initial approval required, health-professions, counseling, etc.)

Not applicable

14. BOARD OF TRUSTEES APPROVAL

Provide the date that the Board approved the proposed program

15. SIMILAR PROGRAMS

List institutions offering program

Proposed undergraduate program – list institutions in Arkansas

Having similar program

Arkansas State
Central Arkansas
Southern Arkansas (Magnolia)

Proposed master’s program – list institutions in Arkansas and region

Not applicable

Proposed doctoral program – list institutions in Arkansas, region, and nation

Not applicable

Why is proposed program needed if offered at other institutions in Arkansas or region?

As the largest institution of higher education in the state, we serve the highest number of students and offer the most diverse range of academic programs. This places us in a unique position to be able to meet the need of students whose needs, interests, and talents may not be met by traditional majors through the offering of a degree in Interdisciplinary Studies. In addition to meeting student needs, we also recognize that much exciting academic and intellectual work today is being done at the interface between disciplines and that the previous rigid boundaries between disciplines may soon be a thing of the past. An Interdisciplinary Studies program would thus allow our faculty to use such a program for the development of new majors or of new options to existing majors

List institutions offering a similar program that the institution used a model to develop the proposed program.

Arizona State
Berkeley

Iowa State
Louisiana State

**California State-Long Beach
Florida
Georgia**

**Maine
Rice**

Provide a copy of the e-mail notification to other institutions in the state of the proposed program and their responses; include your reply to the institutional responses.

16. DESEGREGATION

By program area, provide the total number of students, number of black students, and number of other minority students enrolled in related certificate and/or degree programs (if applicable)

Not applicable

17. INSTITUTIONAL AGREEMENTS/MEMORANDUM OF UNDERSTANDING (MOU)

If the courses or academic support services will be provided by other institutions or organizations, include a copy of the signed MOU that outlines the responsibilities of each party and the effective dates of the agreement.

Not applicable

18. PROVIDE ADDITIONAL INFORMATION IF REQUESTED BY ADHE STAFF